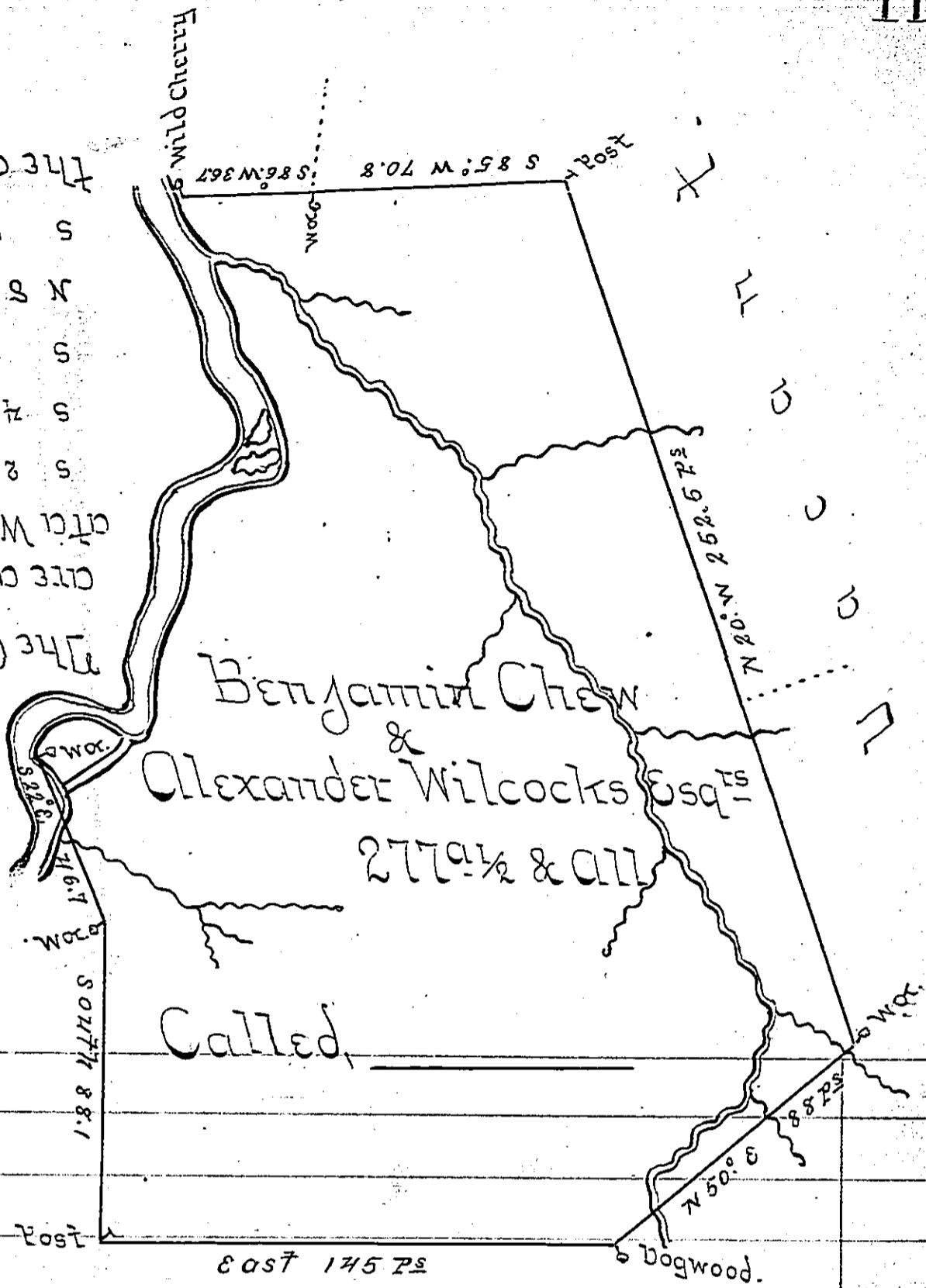


abbj
 The other Courses Begin--
 S 7° W. 12 To a W.O. where
 N 80° W. 29
 S 8° W. 56.5
 S 71° W. 34
 S 20° E. 67.5
 The Courses up the River
 are as followeth Beginning
 at a Wild Cherry thence



Casper Burst.

Situated on the Little Meadow Run in Brothers
 Valley Township Bedford County and Surveyed
 the 28th day of June 1775 in pursuance of a Warrant
 Dated the 5th day of October 1774

Per Of the Lane Dep^t

To John Lukens Esq^r S^r

IN TESTIMONY that the above is a copy of the original remaining on file in
 the Department of Internal Affairs of Pennsylvania, made
 conformably to an Act of Assembly approved the 16th day of
 February, 1833, I have hereunto set my Hand and caused
 the Seal of said Department to be affixed at Harrisburg,
 this eleventh day of May 1904.

Annie R. Brown
 Secretary of Internal Affairs.